



30 Furman Close, Onchan, Isle of Man, IM3 1BT
Asking Price £425,000

- Detached 3-bedroom bungalow on a generous corner plot
- Wrap-around gardens offering privacy and outdoor space
- Spacious lounge with large picture window
- Garage and off-road parking
- Well-laid-out kitchen and dining area with scope to personalise
- Quiet and convenient Onchan cul-de-sac location



Nestled within a quiet and desirable cul-de-sac in Onchan, 30 Furman Close is a charming detached three-bedroom bungalow occupying a generous corner plot. The property offers well-balanced accommodation throughout and provides an excellent opportunity for a buyer to create a comfortable and stylish home in one of the area's most convenient and sought-after locations.

The welcoming entrance hall leads through to a spacious lounge, bathed in natural light from large front-facing windows and offering a relaxing space to unwind or entertain. The adjoining kitchen and dining area are well laid out, with plenty of potential to tailor the space to suit modern living preferences, whether as a traditional setup or an open-plan design.

There are three good-sized bedrooms, each offering pleasant outlooks over the surrounding gardens, together with a well-proportioned family bathroom. The single-level layout will appeal to a wide range of buyers, including families, downsizers, and those seeking practical, low-maintenance living without compromise on space or setting.

Externally, the property occupies an enviable corner position with wrap-around gardens providing privacy, space, and scope for landscaping. A driveway to the front provides off-road parking and access to the attached garage, ideal for additional storage or conversion potential (subject to permissions).

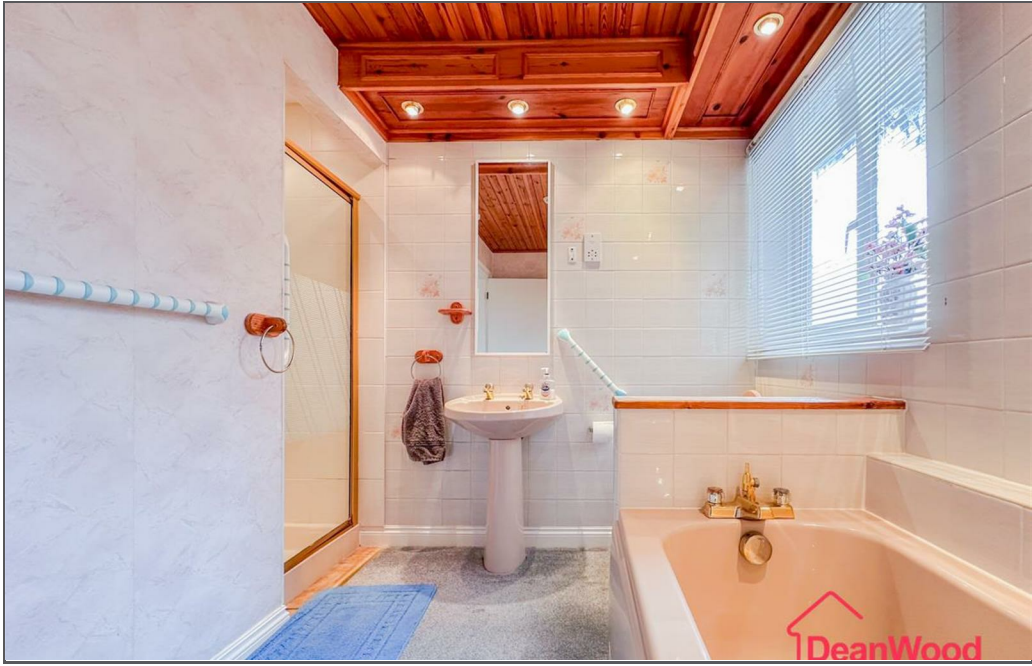
Ideally situated within easy reach of Onchan village shops, schools, and transport links, 30 Furman Close offers both convenience and tranquillity in equal measure. It's a wonderful opportunity to secure a detached bungalow with great proportions, a generous plot, and excellent potential to make it your own.









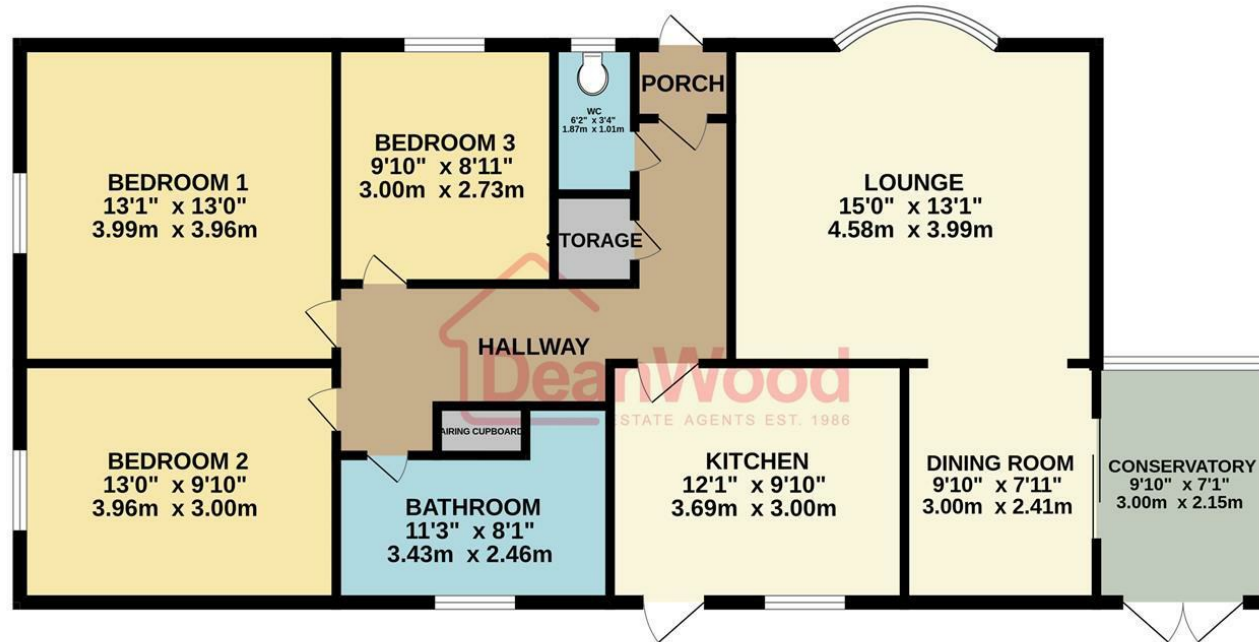




30 Furman Close, Onchan, Isle of Man, IM3 1BT



GROUND FLOOR
1090 sq.ft. (101.3 sq.m.) approx.



TOTAL FLOOR AREA : 1090 sq.ft. (101.3 sq.m.) approx.

Not to scale-for identification purposes only
Made with Metropix ©2025



DOUGLAS

37 VICTORIA STREET
DOUGLAS
ISLE OF MAN IM1 2LF

T 01624 620606

F 01624 677363

E info@deanwood.co.im

CASTLETOWN

COMPTON HOUSE
9 CASTLE STREET CASTLETOWN
ISLE OF MAN IM9 1LF

T 01624 825995

F 01624 825996

E castletown@deanwood.co.im

RAMSEY

LEZAYRE HOUSE
87 PARLIAMENT STREET
RAMSEY ISLE OF MAN IM8 1AQ

T 01624 816111

F 01624 816588

E ramsey@deanwood.co.im

These particulars are for information purposes only. They do not constitute or form any contract nor should any statement contained herein be relied upon as a representation of fact. Neither the vendor nor DeanWood Agencies Limited ('the firm'), nor any officer or employee of the firm accept liability or responsibility for any statement contained herein. The vendor does not by these particulars, nor does the firm, nor does any officer or any employee of the firm have any authority to make or give any representation or warranty whatsoever as regards the property or otherwise. It is the sole responsibility of any person interested in the property described in these particulars to make all proper enquiries and searches to verify the description of the property and all other particulars herein.

FOR MORE PROPERTIES VISIT OUR WEBSITE @ deanwood.im